

# NETiDENT

## Network Performance Management

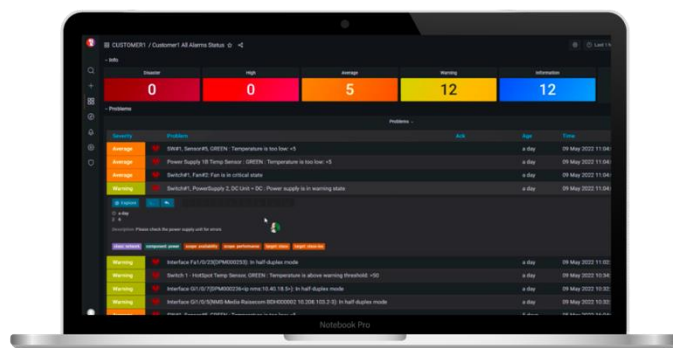
**NETiDENT** Network Performance Management is designed to ensure optimal performance and availability of your network infrastructure. This comprehensive solution provides continuous monitoring, threshold settings, and alerting capabilities tailored to meet the stringent requirements of financial institutions.

### Enhanced Visibility and Proactive Management

NETiDENT offers near real-time insights into the operational status of network devices, enabling you to monitor device performance and availability continuously. By configuring thresholds for response time, CPU, and memory usage, you can receive immediate alerts when predefined limits are exceeded, allowing you to address issues proactively before they impact your operations.

### Comprehensive Reporting and Historical Data Analysis

Generate detailed reports on individual devices and interfaces, facilitating easier analysis and troubleshooting. Access near real-time data along with historical performance metrics for up to 365 days, enabling trend analysis and informed decision-making.



### Multi-Vendor Support and Device Information

NETiDENT supports a wide range of network devices from various manufacturers, ensuring compatibility across your infrastructure. Visualize the latest status and connectivity of your network devices using detailed diagrams. Display essential information such as device type, brand, model, name, IP address, interface type, bandwidth, CPU, memory, and OS version.

### Performance Metrics and Graphical Representation

Monitor key performance metrics including network utilization, CPU utilization, Memory utilization, Power Supply, Fan Status, traffic utilization and data transfer rates based on SNMP V1,V2c,V3. Track the status of network interfaces, identifying issues such as error rate and discard rate and over threshold conditions. Visualize these metrics using various graph formats to gain a comprehensive understanding of your network's performance. Additionally, analyze historical trends to make informed decisions based on past performance data.

## Alert and Notification System

Stay informed with NETiDENT's robust alert and notification system. Monitor the up/down status of your devices and receive notifications through multiple channels including Email, SMS, Line Notify, and Slack. This ensures that your network remains reliable and any potential issues are addressed swiftly.

## Top Resource Consumers Identification

Identify devices that consume the most resources by monitoring network utilization, traffic utilization, interface status, error rate, discard rate and over threshold conditions. This feature helps prioritize resource allocation and address potential bottlenecks in your network infrastructure.

## Benefits

- **Continuous Monitoring:** Gain near real-time insights into network performance and availability.
- **Proactive Issue Resolution:** Set thresholds and receive alerts to address issues before they impact operations.
- **Detailed Reporting:** Access comprehensive reports for in-depth analysis and historical reference.
- **Wide Compatibility:** Ensure seamless integration with a diverse range of network equipment Such as CISCO, ARUBA, F5,Juniper,F5,Palo Alto, ARISTA ,Huawei, Wireless Controller , Access Point, etc. via SNMP V1, V2c ,V3



## Conclusion

NETiDENT Network Performance Management is an indispensable tool for financial institutions aiming to maintain a reliable and high-performing network infrastructure. With its advanced monitoring capabilities, near real-time alerting, and detailed reporting features, NETiDENT provides the necessary insights to maintain optimal network performance and proactively manage potential issues. For more information, please contact us at: [Info@netident.io](mailto:Info@netident.io)

## Additional Features

- **Flexible Deployment:** Can be installed in both Agent-Based and Agent-Less modes, supporting both on-premise and cloud environments.
- **Web-Based Monitoring:** Monitor the status of devices through a web browser.
- **Unlimited Users:** Create an unlimited number of user accounts, with support for concurrent access by at least 30 users. Each user can be assigned different roles, such as Administrator and Operator and integrates seamlessly with Active Directory (AD) and LDAP